



transcribed by
Dave D'Arango 2018
www.davedaranjo.com

Bass Guitar

STYLE

from "1989" (2015)

Taylor Swift

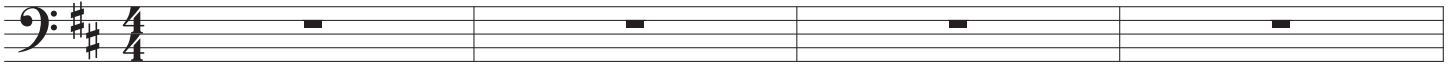
Pop ♩ = 95

(Octave Pedal 8vb)

INTRO

Bm7

G



pad and guitar in

Octave Pedal 8vb

Bm7

G

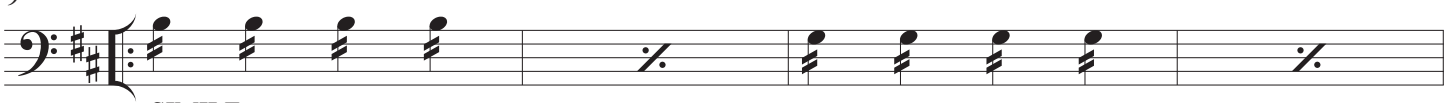


full band in

VERSE 1, 2

Bm7

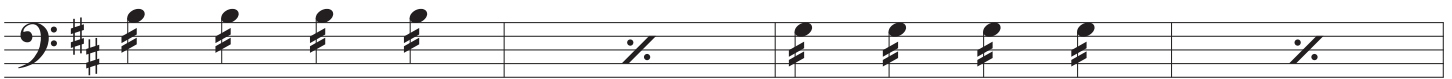
G



SIMILE

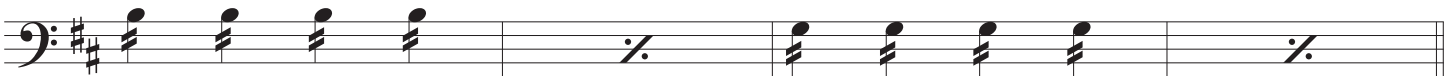
Bm7

G



Bm7

G

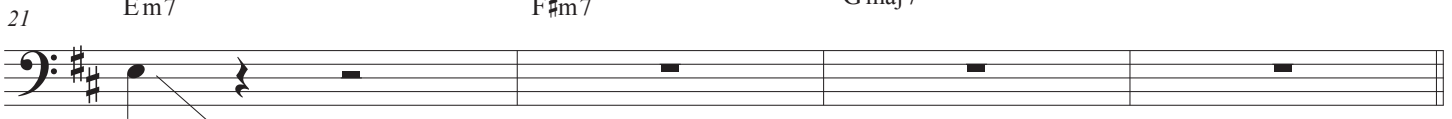


PRE-CHORUS

Em7

F#m7

Gmaj7



2nd time only

CHORUS 1, 2

Style

25

D A G A

29

D A G A

33

D A G A

37

Bm7 A G A

INSTRUMENTAL CHORUS

41

D A G A

45

D A G A

CHORUS 3

49

D A G A

53

Bm7 A G A

57

D

Fine